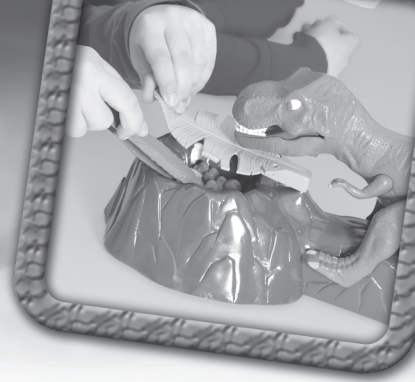


DINO BITE

For 2-4 players, age 4+



Introduction:

The Dino Babies are in danger from the rampaging T-Rex. Can you save them all before the DINO BITES?

Each turn, players try to save a Dino Baby by lifting the giant leaf and sneaking out a Baby using the tweezers provided. But beware! If the T-Rex knows you're there, it roars out loud and lunges forward to scare you away from its next meal!

Contents:

- 5 Blue eggs
- 5 Red eggs
- 5 Green eggs
- 5 Yellow eggs
- 1 T-Rex
- 1 T-Rex nest playing base
- 1 Tweezers (Dino-head shaped)
- 1 Dice
- 1 Instruction sheet

Set up:

For important information on battery installation, and instructions on how to prepare your Dino Bite game for play, please read overleaf.



The game:

The youngest player starts by rolling the dice. The colour shown on the dice is the colour of the egg that the player has to rescue from the T-Rex nest.

The player takes the tweezers and tries to lift up the leaf as carefully as possible, to get the egg from the nest. Younger players can use their fingers instead of the tweezers.

If the T-Rex stays still and the player rescues an egg, they place the egg in front of them and pass the tweezers on to the next player (clockwise).

When the dice roll shows the side with several colours, the player can choose which egg to attempt to rescue from the nest.

If a cross is rolled, the player must miss their turn.

It's an exciting battle to rescue as many eggs as possible ... but watch out! If the T-Rex realises what you're up to, he will attack you, and you are out of the game!

Winner:

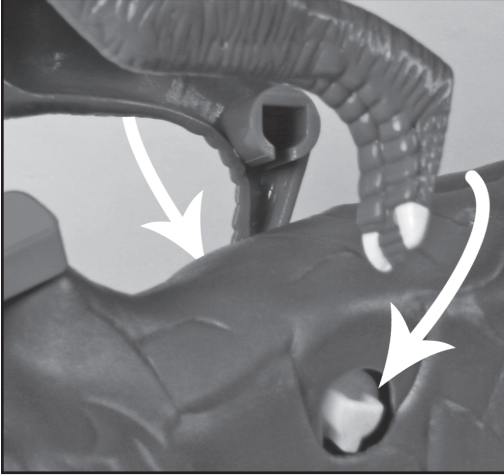
The game continues until there is only one player left who didn't get caught by the Dino. This player is the winner of the game!

Variation:

The game may also be played by counting the number of eggs won over several rounds. The player with the most eggs at the end is the winner.

Preparing for play:

Place the Dino on the Dino nest by attaching his feet to the base: line up the slots on the inside of the feet to the white slots inside the base. Push the feet over the white slots until they line up and click into the base.



Lift up the big leaf and put the eggs inside the nest. Switch on the Dino using the on-off switch located on the bottom of the base. Push the Dino backwards until he holds in position and let the game begin!



See more fun games at www.drumondpark.com

Manufactured by Drumond Developments Ltd.,
PO Box 790, Ipswich IP1 9GP, UK.
© 2011 Drumond Developments Limited.
© Goliath BV, Vijzelpad 80, NL 8051 KR Hattem.
Colour and contents may vary from those shown.
Please retain this information for future reference.



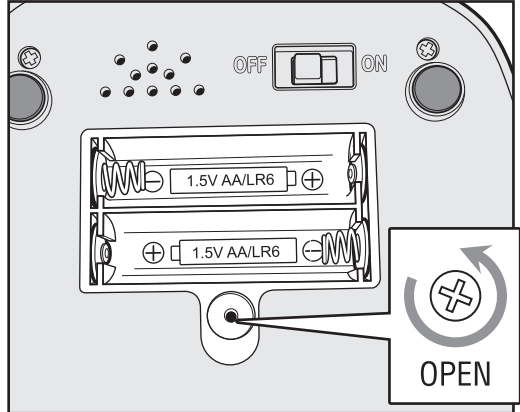
WARNING: Not suitable for children under 36 months due to small parts.
CHOKING HAZARD.

Made in China.

Item no: 1340



Installing the batteries:



Using a screwdriver, loosen the screw on the underneath of the Dino base until the battery compartment cover can be removed.

Study the + and – markings inside the battery compartment.

Insert 2 AA (LR6) Alkaline Batteries (not included) making sure that the '+' and '-' ends of the batteries are aligned with the '+' and '-' markings inside the compartment.

Replace the battery compartment door and tighten the screw with a screwdriver. Do not over-tighten.

ADULT SUPERVISION IS RECOMMENDED WHEN CHANGING BATTERIES.

Battery information

- Remove rechargeable batteries from the toy before recharging.
- Only recharge batteries under adult supervision.
- Do not recharge non-rechargeable batteries.
- Do not mix different types of batteries, or new and used batteries.
- Use only AA or their equivalent as stated.
- Insert batteries in the correct polarity (see diagram)
- Remove exhausted (used) batteries from the toy.
- Do not short circuit the supply terminals of the batteries.
- Do not insert connecting wires into electrical socket outlets.

Disposal of old Electrical and Electronic Equipment.

This symbol on the product or its packaging indicates that this product shall not be treated as household waste. Instead it should be handed over to the appliance collection point for the recycling of electrical and electronic equipment. For more detailed information about recycling of this product, please contact your local Civic Office, your household waste disposal service or the shop where you purchased the product.

If returning the old product to the store where you purchased the new item from you should first check they are in an applicable scheme. The old product must have the same function as the new product and may have to be returned within a set period from the date of purchase of the new item. You must take proof of purchase of your new item when returning your old product to the store.



Requires 2x AA Batteries (NOT INCLUDED). Please remember that small button cells and AA batteries should be kept away from young children as they could be easily swallowed. Seek medical advice if you believe a cell has been swallowed.

